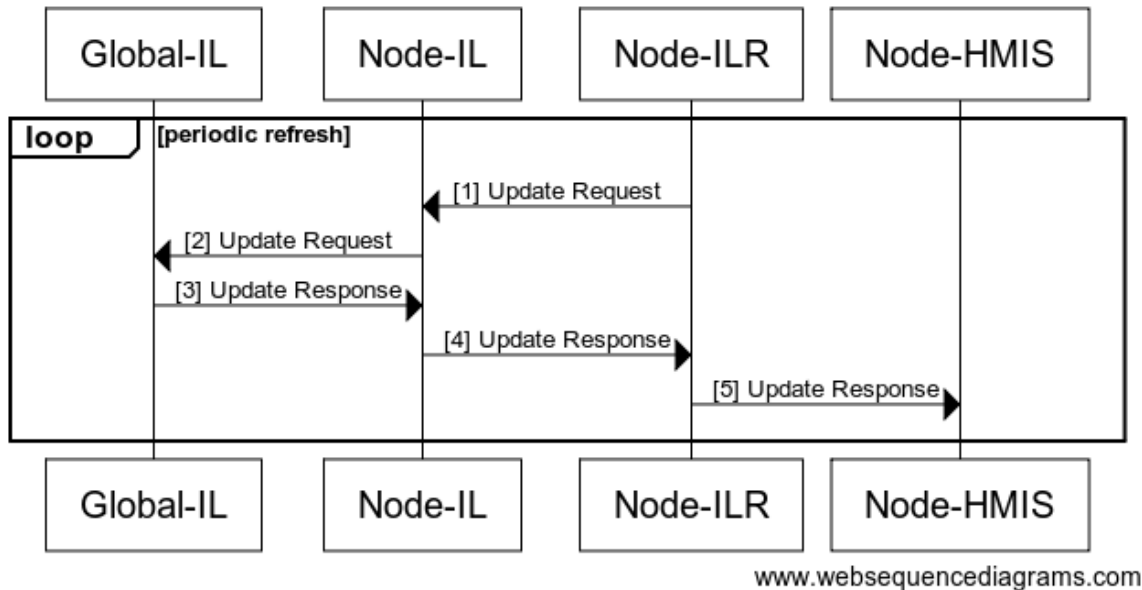


# DATIM Metadata Interaction Notes

## Node Requests Mechanism Update From Global DATIM



Questions to be answered:

1) **Where are associations between mechanisms, indicators and org units to be maintained?**

There is no association being maintained at the DATIM Global level. The association is modeled in CSD and will be accessible there, however it is unclear where the user interface to manage the association should exist.

The business process that needs to be supported:

There is an agreement between the funders and Implementing Partner (IP) concerning the reporting requirements. That agreement specifies the indicators for that mechanism.

There can be communication from Donor to IP sometimes at the end of the period that specifies the indicators that should be collected under a specific mechanisms.

OpenInfoMan should have that data at the country or the MOH instance so that it can be easily queried.

**NEW Functionality needed:** An interface is needed to support the association between mechanisms, indicators and org units. The interface options:

- a. DHIS2
- b. OpenInfoMan

Notes:

- UI needs to be build in either DHIS 2 or in OpenInfoMan
- OpenInfoman would perhaps be easier because it is a heavier lift in DHIS2 as it has no existing "mechanism-indicator-org unit" association.
- However, DHIS2 is maintaining the org unit and the indicator association so it makes sense from a user perspective to store it there
- Note: even if the association is maintained/managed in DHIS2, it will be exported and made query-able in OpenInfoMan

2) **How does the IP/MOH choose mechanisms are loaded into the DHIS 2 system?**

Business Process to be supported: There may be many mechanisms, but you only want to load the funded mechanisms. The ITI-73 query will return more mechanisms than then node is funded for because there is no association in the Global DATIM instance.

**New functionality needed:** Need to have some way to choose which mechanisms to load from the returned ITI-73 query.

- Propose a DHIS 2 app for this. - Application would use an ITI-73 to display options on an interface and user would select from the options.

3) How will the mechanisms be imported into DHIS2?

**New Functionality needed:** A way to import mechanisms into DHIS2 Options:

1. ITI-73 returns DXF from DATIM Global for direct input into DHIS2
2. ITI-73 returns a CSD document and then translation of CSD into DXF happens on the DHIS2 side.

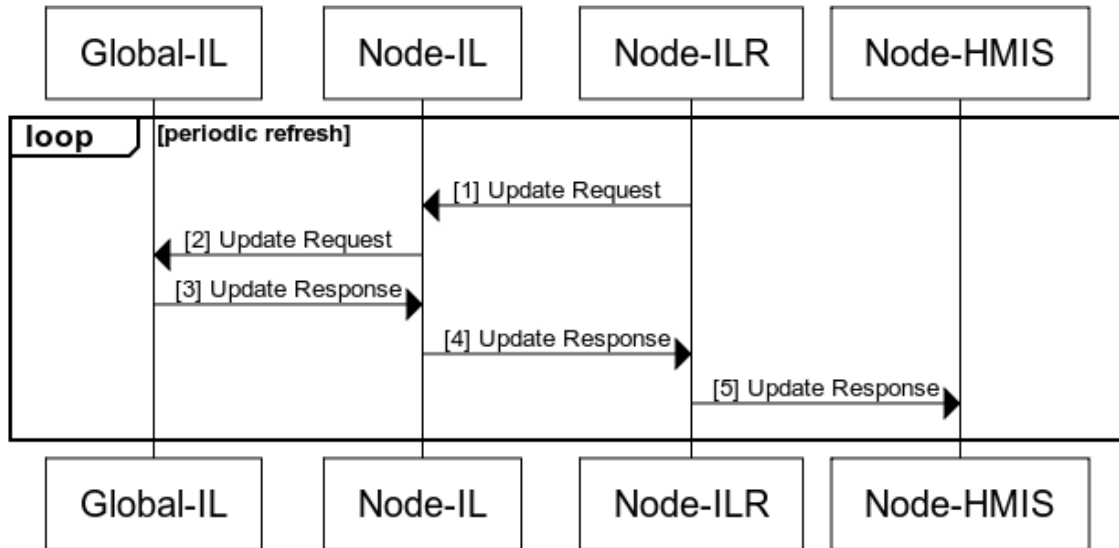
notes:

- in 2) the ITI-73 transaction already exists but in 1) the existing ITI-73 transaction would need to be modified to transform from CSD into DXF
- doing the transform into DXF at the OpenInfoMan would be much simpler than doing it in DHIS2

4) How will the request to update mechanisms be specified and initiated?

Step	Transaction Description	Message Specification	OpenHIE Support Notes
1	On a regularly scheduled basis, CSD ITI-73 Care Services Discovery message requesting an update on the mechanisms from the Global DATIM instance. ??? How is this query initiated? from an interface? In which application? Does it happen on a scheduled basis or is there human intervention? Will the ITI-73 be different for every implementor. How will the query be configured?	ITI-73	Need to make sure that the IL can handle this out-going message type.  ITI-73 was tested in V1.0, but not going from the ILR to the IL.
2	Message passed from the Country IL to the Global DATIM instance's IL.	ITI-73	
3	The DATIM Global instance responds with the ITI-73 with a CSD document OR a DXF document. The DXF document can be directly sent to DHIS2, but the CSD document would go into OpenInfoMan first.	ITI-73 response (CSD Document)	Need to make sure that the IL can handle this in-coming message type.  CSD responses were tested in V1.0, but going from the IL to the ILR.
4	The CSD document is updated in InfoMan.	ITI-73 response (CSD Document)	
5	Import DXF document document into HMIS - Is this done manually?	DXF	This was done manually in OpenHIE 1.0

## Node Requests Mechanism Update From Global DATIM



www.websequencediagrams.com

### INDICATORS:

Like the mechanism questions. Don't want to load in the ones you don't need. Need a UI to select the indicators we are loading. DHIS2 is probably the best place to have the mechanisms. Having the UI for this is much more natural in DHIS2 than as is the case with the mechanisms. Need an app to create the ITI-73 to search for services, returns result. Result in CSD to InfoMan or DXF natively (Carl votes for DXF).

ORG UNITS - Like the indicators, select the ones you want before you import.

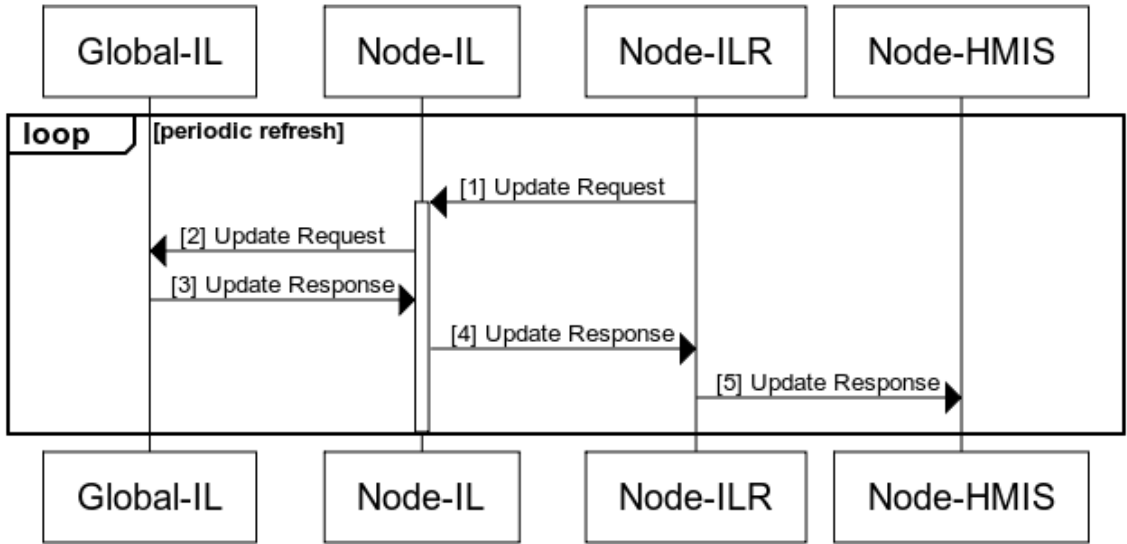
How are stie names from teh country and PEPFAR mapped? In infoman? In DHIS2?

DHIS2 App or OpenInfoMan app to determine what needs to be imported

Ideal soslution - Orgunit case - OpenInfoMan produce the elements

ITI-73. TO give DHIS2 the list and then dsplay.

## Node Requests Disaggregator Update From Global DATIM



www.websequencediagrams.com

Step	Transaction Description	Message Specification	OpenHIE Support Notes
1	On a regularly scheduled basis, Chron jobs are used to generate a ITI-48 Retrieve Value Set message requesting an update of the disaggregator values.  Is there a need to coordinate this update with the indicator update?	ITI-48	This message was not tested in OpenHIE V1.0, what components need to support this transaction? The IL?
2	Message passed from the Country IL to the Global DATIM instance IL.	ITI-48	
3	The DATIM Global instance responds with the ITI-48 with an SVS	ITI-48 Response (SVS)	This message was not tested in OpenHIE V1.0, what components need to support this? The IL, the InfoMan?
4	??The Disaggregators are stored in OpenInfoMan???? transform into XSD?	ITI-48 Response (SVS)	
5	Import into DHIS2 via an interface?	XDF	Not tested in OpenHIE 1.0