

Merge Federated Health Worker Directories

Overview

Description:

This workflow describes the combination of several federated health workforce information systems. It is essentially a representation of the transaction between the InfoManager and the Service Directory actors in the CSD standard.

Sponsor: Carl Leitner

Status: Proposed

Referenced Standards and APIs:

- Care Services Discovery (CSD): ftp://ftp.ihe.net/DocumentPublication/CurrentPublished/ITInfrastructure/IHE_ITI_Suppl_CSD.pdf

Last Modified: 18/02/2014

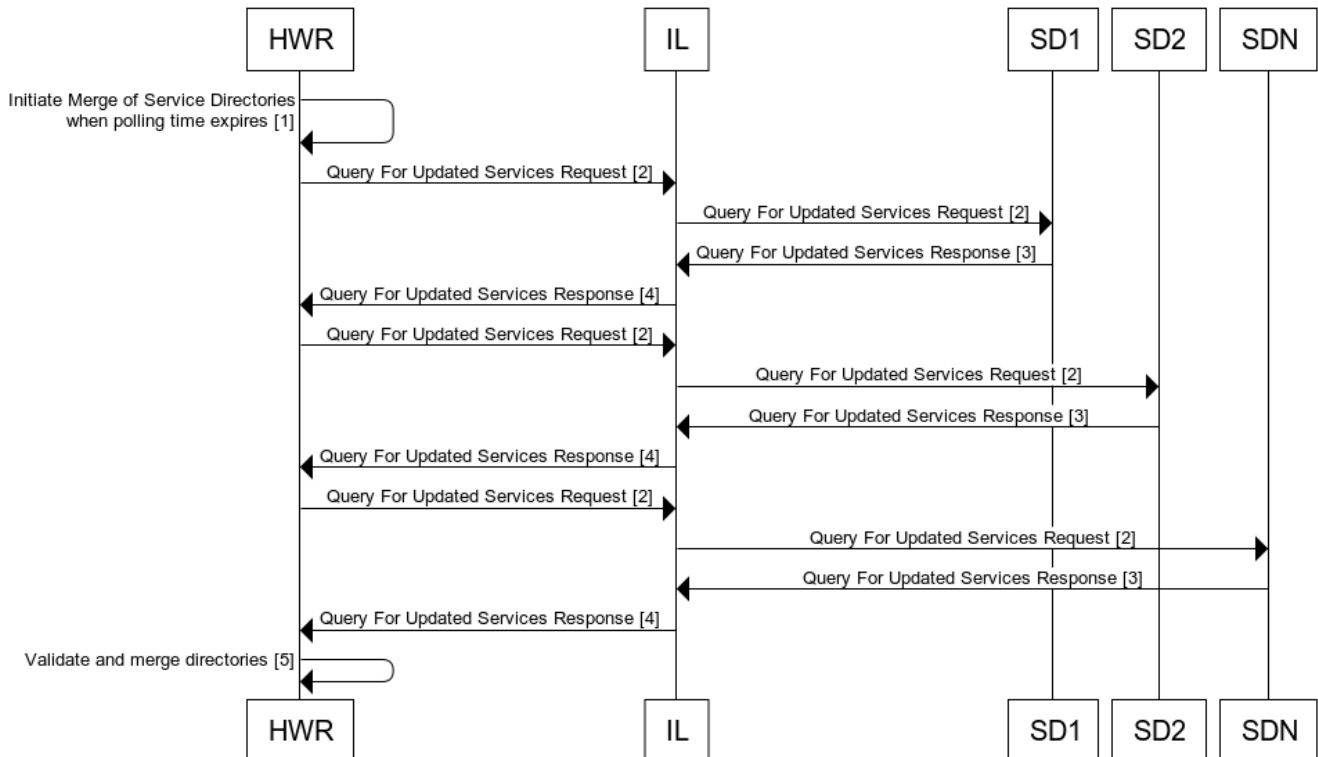
Actors:

- IL = Interoperability Layer to handle data governance and security issues, CSD Services Finder
- SD = One of multiple CSD Service Directories such as an HRIS within a set of districts, within a set of states, or between an FBO and the MOH
- HWR = Health Worker Registry HWR acting as CSD InfoManager

Issues:

- If multiple HWRs' credentials are updated, should the IL loop through each HWR, or should that be sent as one request to the HWR? The former allows more granular error logging while the later would be faster and require last processing by the IL
- This workflow describes the current OpenHIM's OpenInfoMan implementation. Maybe IL shouldn't initiate the merge for the HWR. Perhaps a cronjob. Potential issue with cronjob is that it makes it more difficult to have a nice interface for managing the poll time. If we switched to a cronjob/external initiation, are there implications for monitoring of the polling?

Merge Federated Health Worker Directories



Technical details

Ref	Interaction	Endpoint	Data	Transaction Specification
1				Native API
2			POST SOAP request with last poll time	Query for Updated Services Transaction [ITI-74]
3			CSD document with updated health worker information	Query for Updated Services Transaction [ITI-74]
4			CSD document with updated health worker information	Query for Updated Services Transaction [ITI-74]
5				Defined by data governance policy in place between federated systems