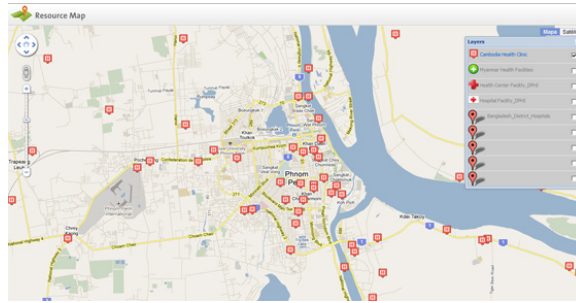


Facility Registry Community

Welcome to the OpenHIE Facility Registry Community!

The OpenHIE Facility Registry (OHIE-FR) Community supports the development and implementation of technologies for health facility registries. This includes the design and creation of a *Master Facility List (MFL)*, or standardized data detailing health facilities and *facility registries*, the tool that acts as the authority to collect, manage, store, and share facility data.



In 2020, OHIE-FR aims to engage FR architects, implementers, and most importantly those who use, maintain or have and need for FRs in their countries. Collectively, the community will help:

- identify, establish, and share guidelines for FR architecture
- support those seeking guidance on implementation of FRs
- serve as a platform to share lessons learned, through the showcasing of country level FR implementations

Upcoming Events

Team Calendars

Quick References

Connect and Join Our Community

- [Facility Registry Meetings](#)
- [OpenHIE Discourse](#)
- [Contact the Community Organizer](#)

Other Links

- [FR Requirements Summary](#)
- [Landscape of Implementations](#)
- [Other Documentation](#)
- [Facility Registry Demo Request](#)
- [Reference Facility Registry Software](#)
- [How to Integrate With a Facility Registry \[Coming Soon\]](#)