

# Translate Code

## Notice

The official version of the OHIE workflows can be found in the [OpenHIE Architecture Specification](#).

## Overview

**Description:** This transaction allows a PoS, or any OHIE component, to access terminological information in the terminology service and retrieve the translation, or "mapping" of a Concept in one Code System to a Concept in another Code System. Mapping is frequently required when patient data is collected using Concepts/Codes from one Code System but the data must be reported or aggregated, say for decision support, in a different Code System. The set of such associated Concepts, usually for a specific use-case, are stored in the Terminology Service in a FHIR Resource called a ConceptMap.

Both external systems and systems inside the HIE may perform this transaction directly with the TS. The sequence diagram below shows the steps that occur for a system using this transaction.

1. Mapping: Using the ConceptMap 'ICD-10 to SNOMED CT Diseases', retrieve the SNOMED CT Concept Code(s) that is associated with '123XYZ' in ICD-10.

**Sponsor:** [Jack Bowie](#)

**Status:** This operation has been extensively tested in FHIR Connectathons.

## Referenced Standards and APIs

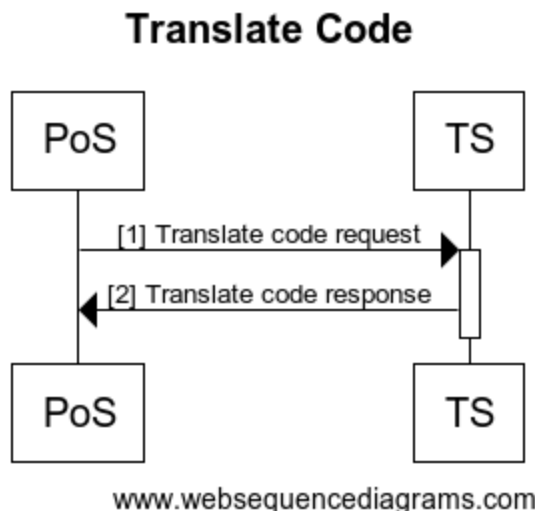
- The FHIR ConceptMap *translate* operation: <http://build.fhir.org/conceptmap-operation-translate.html>. HL7 FHIR Specifications v3.0 or higher support *translate*. The response is a set of FHIR Parameter objects that include a 'result' (whether there is an acceptable match) and a list of possible matches. The list of matches may include notes of Codes for which mappings are specifically excluded, and qualifications on the applicability of matches.
- This workflow implements the IHE IT Infrastructure Technical Framework Supplement - Sharing Valuesets, Codes, and Maps (SVCN) Transaction: Translate Code ITI-Y7.

## Assumptions and Prerequisites

- The required ConceptMap and associated CodeSystem(s) have been preloaded into the Terminology Service.

## Actors

- PoS - The point-of-service system or other HIE component that is requesting the translation.
- TS - Stores the curated, official version of the ConceptMap for the health system.



## Technical details

Ref	Interaction	Endpoint	Data	Transaction Specification
1	ConceptMap translate request	TS	The translate request is triggered by a PoS or other HIE component. Input: The ConceptMap name and source Code and CodeSystem.	FHIR ConceptMap Resource, \$translate operation
2	ConceptMap translate response	PoS	The response is sent back to the requesting system. Output: a set of parameters including a Boolean 'result, and a list of, possibly qualified, Code matches.	FHIR ConceptMap Resource, \$translate operation