

# Send Case Report to SHR



This is a draft

## Notice

The official version of the OHIE workflows can be found in the [OpenHIE Architecture Specification](#).

## Overview

Description: A case report from an external system is sent to the HIE to be incorporated into the SHR.

Sponsor: Regenstrief Institute

Status: proposed

Last Modified: 19-July-2018

## Referenced Standards and APIs:

- CDA documents profiled by IHE PCC as the clinical data

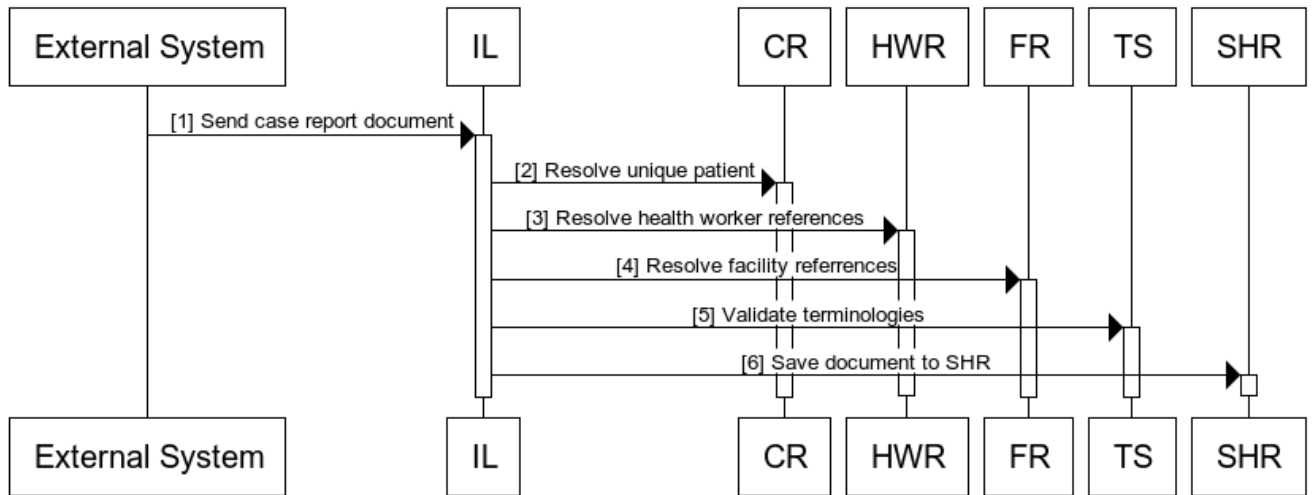
## Assumptions and prerequisites

- Patient has been registered in the external system (EMR) and in the registration is also in the HIE CR.
- Facility exists in the FR
- Health workers exist in the HWR
- Terminologies are aligned between reporting system(s) and the HIE

## Actors

- External System - The point of service system like an EMR that is used to capture patient data.
- IL - Mediates the transactions between the PoS system and the infrastructure services to facilitate easier interoperability.
- HWR
- CR - The source of truth for patient demographic and identifier detail. It is able to be queried using an identifier to find the enterprise identifier for a particular person.
- FR - The source of truth for facility information. It is able to be queried for details about a particular facility by ID.
- TS -
- SHR - Stored patients clinical information. It is able to receive and store a patient clinical documents.

## Send Case Reports to SHR



www.websequencediagrams.com

## Technical details

Ref	Interaction	Endpoint	Data	Transaction Specification
1	Submit case report	IL	The PoS submits a CDA document to the IL, the CDA document is wrapped inside an XDS soap envelope, the message is optimized with <a href="#">MTOM/XOP</a> .	<a href="#">IHE ITI TF-3</a>
2	Get patient from CR by identifier	CR	The message is channeled through the XDS mediator which queries the CR for the patient's enterprise identifier so as to enrich the document by adding it.  Communication between the mediator and CR is over <a href="#">MLLP</a>	<a href="#">PIX/PDQ</a>
3	Get provider from HWR by identifier	HWR		
4	Get location from FR by identifier	FR		
5	Validate terminologies	TS		
6	Send case report to the SHR	SHR	The mediator forwards the message to the SHR after enriching it, the SHR saves the document in its document store, extracts the discreet data from the enclosed CDA document and saves it.	<a href="#">IHE ITI TF-3</a>