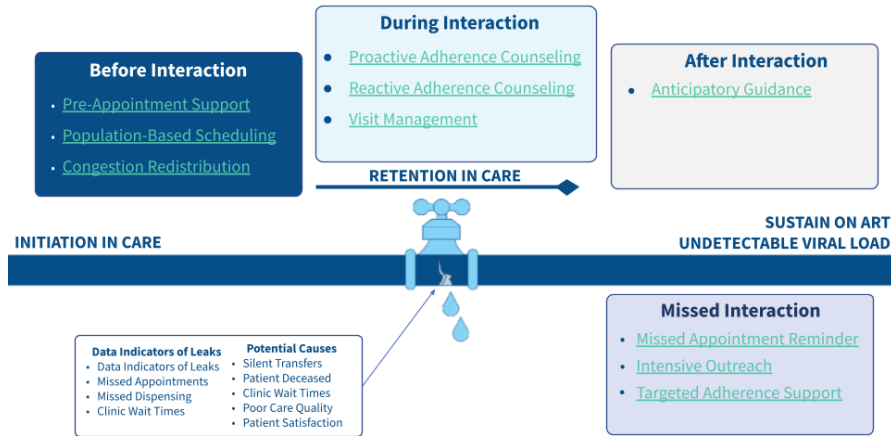


10 March 2021 DUC Meeting 7 Summary "Bringing It Together: Lessons Learned So Far"

This meeting was a collaborative working session to look at version one of our working model. The model is an attempt to describe the care process around HIV treatment continuity, rather than a formal model that describes the entire care cascade and the way data flows. The purpose of the model is to help build a common language and understanding of what we are learning through the DUC and provide a framework for sharing that information.

Working Model, v0.1



Dr. Olivia Velez has also posted an interactive version of this working model to the community forum.

In the model we describe two types of touchpoints or interactions between parties involved in care delivery:

- Patient touch points are between the care system and the patient, such as when a patient comes for a clinic visit.
- System touchpoints are between members of the care system, such as a clinic and a dispensary sharing information to support medication adherence.

Within each of these touchpoints, we shared examples of interventions that have been discussed in DUC meetings as well as through our interviews and literature reviews. Future iterations of the model will allow us to compare and contrast similar interventions so that we can better understand best practices and learn more about innovative approaches.

During the meeting, we experimented with Menti, as a communications tool for members to share their interventions in relation to touchpoints as well as to garner feedback on the model. Community members provided insight into what they would like to see in the comparisons as we drill down into specific interventions.

You can also post follow-up questions and thoughts to our Discourse "Questions" page or review and give feedback on the model [here](#).