

# OpenLMIS v3 - TZ Facility Registry with mCSD

This page documents the Connect-A-Thon project to connect OpenLMIS version 3 to the Tanzania Facility Registry using the mCSD profile.

**Goal:** The goal of this project is to develop tools that support the integration of Supply Chain locations with Facilities that are in an existing Facility Registry using the mCSD profile.

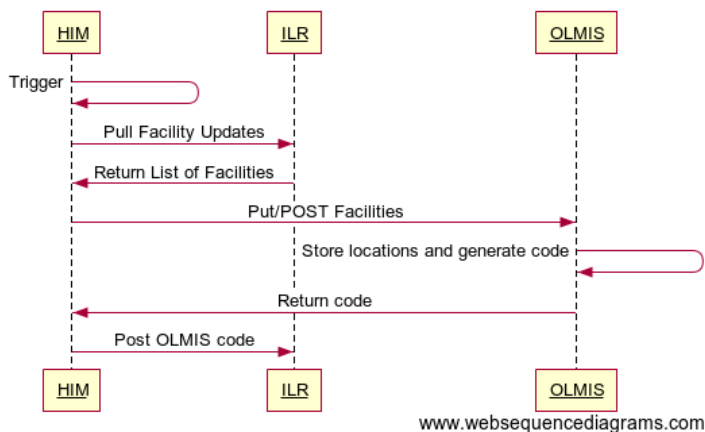
**Scope:** We will focus on mapping locations between the Tanzania Facility Registry and a CSV export from eLMIS, for the Dar-es-salaam district.

## Steps

- Export a CSV file of locations from eLMIS for testing purposes. This export will include the geographic levels, zones and locations in the Dar-es-salaam district. Note: This CSV is sensitive information and is only available to participants during the connect-a-thon
- Stand-up a sandbox environment of the Tanzania HIE (Facility Registry, ILR and HIM)
- Stand-up a sandbox environment of OpenLMIS v3
- Connect GOFR to the Tanzania HIE Sandbox environment and map locations in the district
- Import that mapping into the ILR
- Develop a Health Information Mediator for OpenHIM that performs the business logic and workflows outlined below
- Demonstrate the two scenarios:
  - OpenLMIS v3 acts as a slave to the information in the ILR
  - OpenLMIS v3 acts as a master (producer) of locations consumed by the ILR

## Workflow 1

### Workflow 1: ILR is the master and OLMIS is the slave

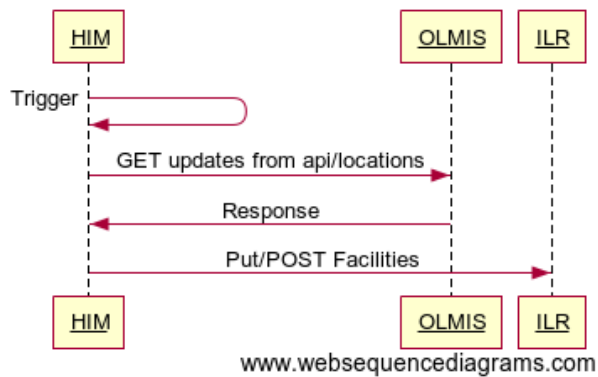


title Workflow 1: ILR is the master and OLMIS is the slave

HIM->>HIM: Trigger  
HIM->>ILR: Pull Facility Updates  
ILR->>HIM: Return List of Facilities  
HIM->>OLMIS: Put/POST Facilities  
OLMIS->>OLMIS: Store locations and generate code  
OLMIS->>HIM: Return code  
HIM->>ILR: Post OLMIS code

## Workflow 2

## Workflow 2: OLMIS is a producer of location information



title Workflow 2: OLMIS is a producer of location information

HIM->HIM: Trigger

HIM->OLMIS: GET updates from api/locations

OLMIS->HIM: Response

HIM->ILR: Put/POST Facilities

## Digital Assets

- [GitHub repository for openhim-mediator-openlmis](#)
- [OpenLMIS JIRA Epic \(with tickets\)](#)
- [TZ Facility Sync Mediator](#)
- [Global Open Facility Registry](#)

## Access Required

- Testing environment for the HFR of TZ (MOH is the contact)
- eLMIS facility list export (MOH is the contact)